

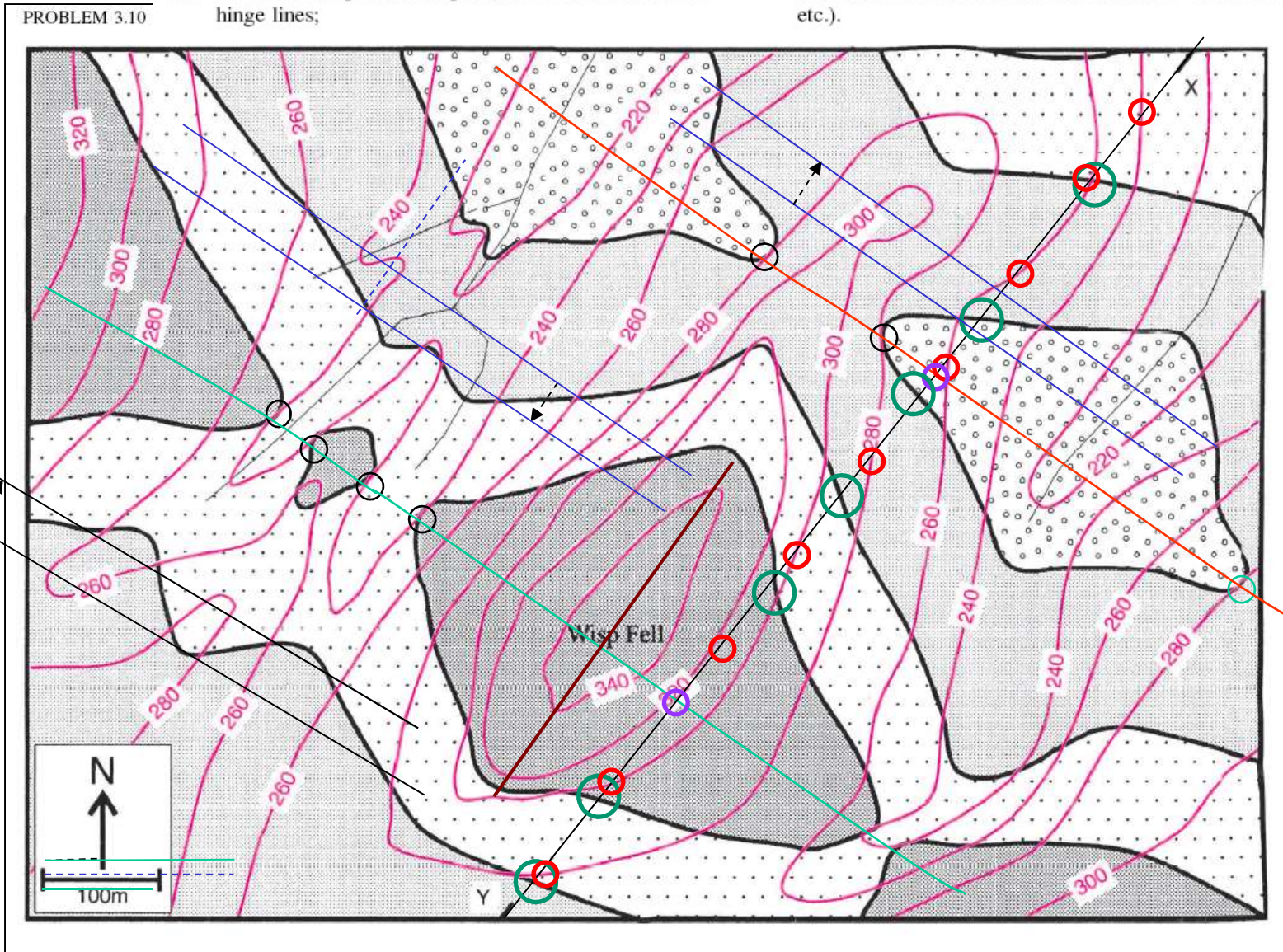
Explanation:

○ Hinge point

On each map:

- (a) mark hinge points, antiformal and synformal axial traces and hinge lines;
- (b) determine the plunge and plunge direction of the fold hinge lines;

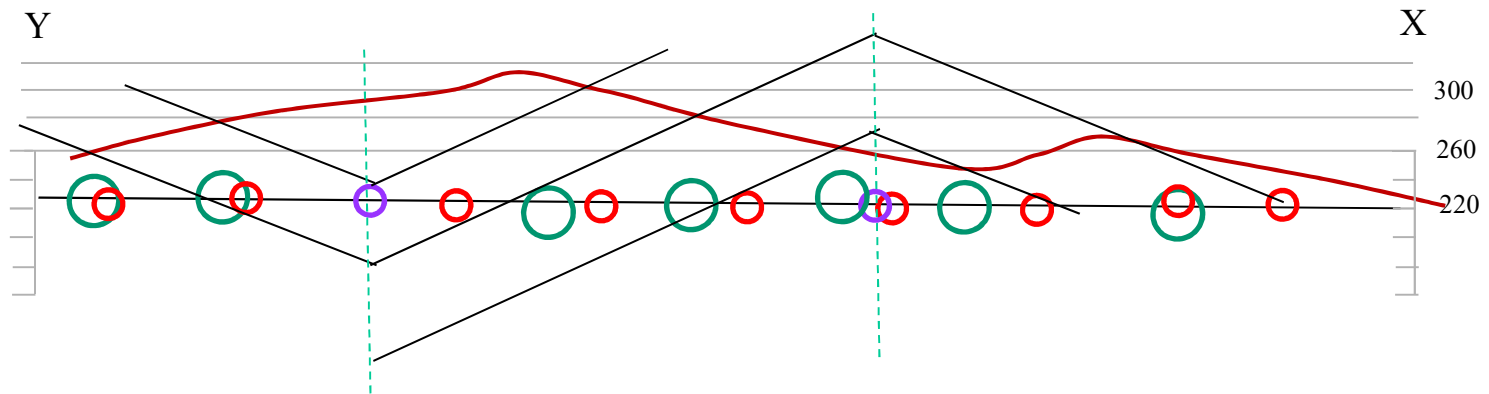
- (c) deduce the general attitude (dip) of the fold axial surfaces;
- (d) construct a vertical cross section along the line X-Y;
- (e) give a full description of the characters of the folds (e.g. tightness, symmetry, bed thickness variations, etc.).



Structure contours for a limb

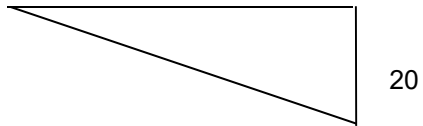
Use the structure contours to figure out the limb dip, which is the same dip value for all limbs,

# CROSS SECTION



Structure contours 1

44



Dip:  $\text{TAN } X = 20 / 44 = 24^\circ$

No plunge, horizontal fold axes

Vertical axial plane